



**Emergency switch with
glass panel**
Type C65/G
(waterproof)

The waterproof C65/G emergency switch was developed based on the IP 66 protection standard. It is particularly well suited for public accessible areas, since the switch is protected against unintentional activation by a replaceable glass panel. The C65/G possesses a durable, thick-walled and shock-proof plastic casing. The emergency switch is also outfitted with a tall cylindrical shroud.

Emergency switch with glass panel

Type C65/G

(waterproof)



Order basis	Casing color	Index no	Roof color	Index no	Switch type	Contacts	Type of contact
82	red	1	gray	1	Mushroom button black	pushing	2no + 2nc
83	gray	2	red	3	Mushroom button Twist release red	latching Emergency Off	240VAC 10A
		3	yellow	4	Mushroom button Key release red		

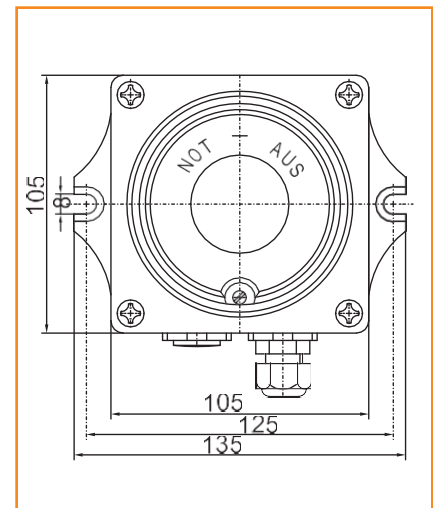
Technical data

Storage temperature	-40°C - +70°C
Operating temperature	-20°C - +40°C
Casing enclosure	IP 66
Electrical data	240VAC/10A

Accessories

Emergency hammer	Order no. 54.39
------------------	-----------------

Dimensioned drawing



Spare parts

Replacement Glass	Order no. 8211.02.10.02
-------------------	-------------------------

Dimensions:

105 (length) x 105 (width) x 125 (height) mm

Distance between holes for mounting:

125mm

Cable gland:

2 x M20 x 1,5 (Ø 6-12mm)

Weight:

approx. 800g

